

**TOSHIBA**  
Leading Innovation >>>

Toshiba Semiconductor and Storage

## TC7SH14F,LJ(CT)

Nambari ya Sehemu:

TC7SH14F,LJ(CT)

Mtengenezaji / Brand:

Toshiba Semiconductor and Storage

Maelezo ya bidhaa

IC INVERTER SCHMITT 1CH SMV

Datasheets:

[TC7SH14F,LJ\(CT\).pdf](#)

Hali ya RoHS

Kuongoza bure / RoHS Inavyotakiwa

Hali

222051 pcs stock

Meli Kutoka

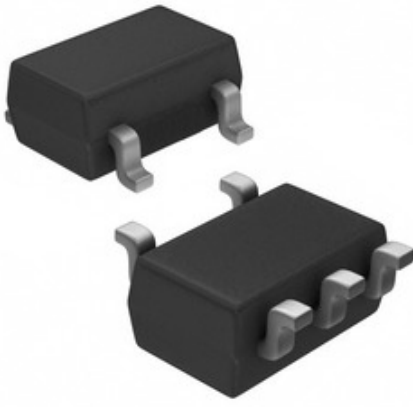
Hong Kong

Njia ya Uhamisho

DHL/Fedex/TNT/UPS/EMS

**OMBI LA NUKUU**

### Storage



Picha inaweza kuwa uwakilishi. Angalia maelezo ya maelezo ya bidhaa.

### Ufafanuzi wa TC7SH14F,LJ(CT)

NAMBARI YA SEHEMU	TC7SH14F,LJ(CT)
MTENGENEZAJI	Toshiba Semiconductor and Storage
MAELEZO	IC INVERTER SCHMITT 1CH SMV
HALI YA BURE YA BURE / HALI YA ROHS	Kuongoza bure / RoHS Inavyotakiwa
KIASI INAPATIKANA	222051 pcs
KARATASI YA DATA	<a href="#">TC7SH14F,LJ(CT).pdf</a>
UGAVI WA VOLTAGE	2 V ~ 5.5 V
DUKA LA KIFAA CHA WASAMBAZAJI	SMV
MFULULIZO	TC7SH
UFUNGAJI	Cut Tape (CT)
PAKET / UCHUNGUZI	SC-74A, SOT-753
MAJINA MENGINE	TC7SH14FLJ(CTCT)
JOTO LA UENDESHAJI	-40°C ~ 85°C
IDADI YA PEMBEJEO	1
IDADI YA CIRCUITS	1
AINA YA KUINUA	Surface Mount
KIWANGO CHA SENSITIVITY MOISTURE (MSL)	1 (Unlimited)
KUENEA KWA MAX KWA KUCHELEWA @ V, MAX CL	10.6ns @ 5V, 50pF
AINA YA MANTIKI	Inverter
KIWANGO CHA MANTIKI - CHINI	0.9 V ~ 1.65 V
LEVEL LOGIC - HIGH	2.2 V ~ 3.85 V
HALI YA BURE YA BURE / HALI YA ROHS	Lead free / RoHS Compliant
VIPENGELE	Schmitt Trigger
MAELEZO YA KINA	Inverter IC 1 Channel Schmitt Trigger SMV
SASA - QUIESCENT (MAX)	2µA
SASA - PATO LA JUU, CHINI	8mA, 8mA

### Tags kuhusiana

Toshiba Semiconductor and Storage TC7SH14F,LJ(CT)	Mgawanyiko wa TC7SH14F,LJ(CT)	Mtoa TC7SH14F,LJ(CT)
TC7SH14F,LJ(CT) Bei	TC7SH14F,LJ(CT) Picha	TC7SH14F,LJ(CT) Image
Datasheet ya TC7SH14F,LJ(CT) PDF	TC7SH14F,LJ(CT) Pakua Datasheet	Datasheet ya TC7SH14F,LJ(CT)
TC7SH14F,LJ(CT) Stock	Nunua TC7SH14F,LJ(CT)	Nunua Toshiba Semiconductor and Storage TC7SH14F,LJ(CT)
Toshiba Semiconductor and Storage TC7SH14F,LJ(CT)	Mtoa Toshiba Semiconductor and Storage	Mgawanyiko wa Toshiba Semiconductor and Storage
Toshiba Semiconductor and Storage TC7SH14F,LJ(CT)	Toshiba TC7SH14F,LJ(CT)	

### Bidhaa zinazohusiana

<p><b>TC7SH126FSTPL3</b> Wazalishaji: Toshiba Semiconductor and Storage Maelezo: IC BUFFER NON-INVERT 5.5V FSV Katika hisa: 5193 pcs</p> <p><b>RFQ</b></p>	<p><b>TC7SH17F,LJ(CT)</b> Wazalishaji: Toshiba Semiconductor and Storage Maelezo: IC BUFFER NON-INVERT 5.5V SMV Katika hisa: 1375029 pcs</p> <p><b>RFQ</b></p>
<p><b>TC7SH125FU,LJ(CT)</b> Wazalishaji: Toshiba Semiconductor and Storage Maelezo: IC BUFFER NON-INVERT 5.5V USV Katika hisa: 288843 pcs</p> <p><b>RFQ</b></p>	<p><b>TC7SH125FSTPL3</b> Wazalishaji: Toshiba Semiconductor and Storage Maelezo: IC BUFFER NON-INVERT 5.5V FSV Katika hisa: 3229 pcs</p> <p><b>RFQ</b></p>
<p><b>TC7SH17F,LJ</b> Wazalishaji: Toshiba Semiconductor and Storage Maelezo: IC BUFFER NON-INVERT 5.5V SMV Katika hisa: 195671 pcs</p> <p><b>RFQ</b></p>	<p><b>TC7SH14FU,LJ(CT)</b> Wazalishaji: Toshiba Semiconductor and Storage Maelezo: IC INVERTER SCHMITT 1CH USV Katika hisa: 264417 pcs</p> <p><b>RFQ</b></p>
<p><b>TC7SH14FSTPL3</b> Wazalishaji: Toshiba Semiconductor and Storage Maelezo: IC INVERTER SCHMITT 1CH FSV Katika hisa: 5060 pcs</p> <p><b>RFQ</b></p>	<p><b>TC7SH126F,LJ(CT)</b> Wazalishaji: Toshiba Semiconductor and Storage Maelezo: IC BUFFER NON-INVERT 5.5V SMV Katika hisa: 264417 pcs</p> <p><b>RFQ</b></p>
<p><b>TC7SH17FU,LJ(CT)</b> Wazalishaji: Toshiba Semiconductor and Storage Maelezo: IC BUFFER NON-INVERT 5.5V USV Katika hisa: 1526522 pcs</p> <p><b>RFQ</b></p>	<p><b>TC7SH32F,LJ(CT)</b> Wazalishaji: Toshiba Semiconductor and Storage Maelezo: IC GATE OR 1CH 2-INP SMV Katika hisa: 1261543 pcs</p> <p><b>RFQ</b></p>
<p><b>TC7SH126FU,LJ(CT)</b> Wazalishaji: Toshiba Semiconductor and Storage Maelezo: IC BUFFER NON-INVERT 5.5V USV Katika hisa: 1529148 pcs</p> <p><b>RFQ</b></p>	<p><b>TC7SH126FE,LM</b> Wazalishaji: Toshiba Semiconductor and Storage Maelezo: IC BUFFER NON-INVERT 5.5V ESV Katika hisa: 5201 pcs</p> <p><b>RFQ</b></p>